



ORIGINALLUXURY

Extract from ORIGINALLUXURY Technology For Transparency
2nd Edition, March 2024



VD GLOBAL

E4S

IMD

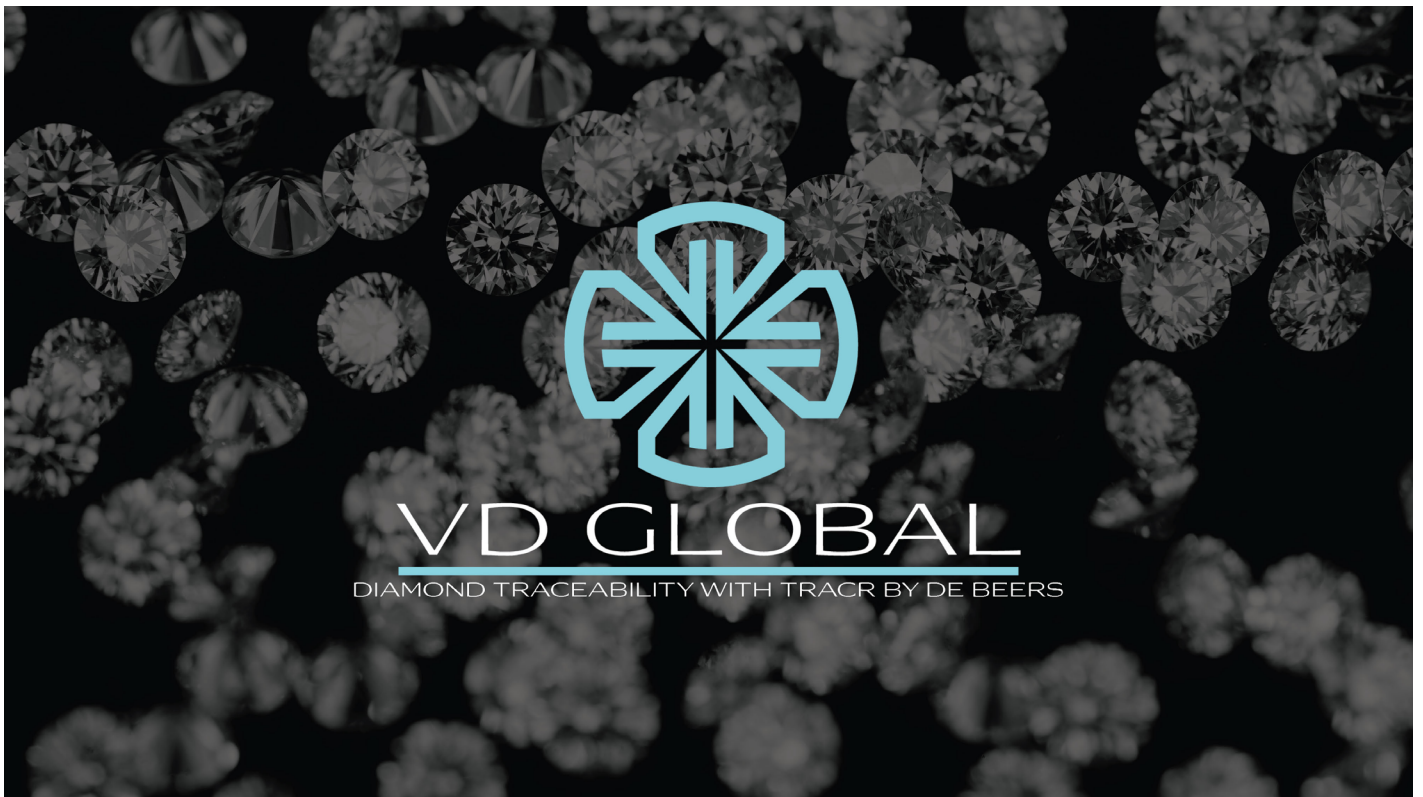
Unil
UNIL | Université de Lausanne
HEC Lausanne

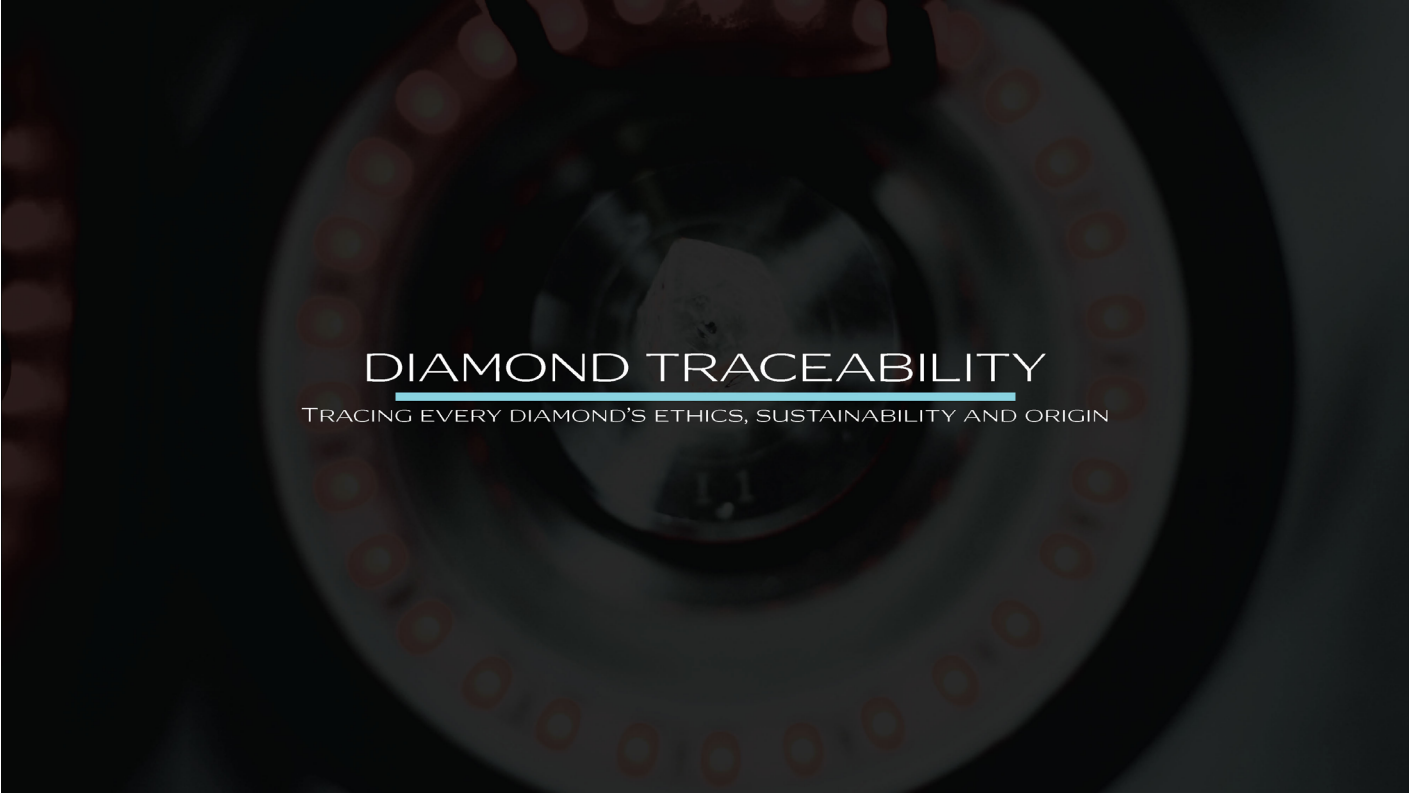
EPFL



ORIGINAL

DISCLAIMER: *The content of this document and its associated documents is the sole responsibility of the company they are referring to and do not necessarily reflect the views of ORIGINALLUXURY and its members. This content does not constitute and cannot be relied upon as legal advice of any sort and cannot be considered an exhaustive review of legal or regulatory compliance.*





DIAMOND TRACEABILITY

TRACING EVERY DIAMOND'S ETHICS, SUSTAINABILITY AND ORIGIN



EVERY DIAMOND IS TRACEABLE

WITH A PROCESS THAT INVOLVES RECORDING AND DOCUMENTING INFORMATION ABOUT EACH STEP IN THE DIAMOND SUPPLY CHAIN, INCLUDING THE MINING, CUTTING, POLISHING, AND DISTRIBUTION.



EVERY DIAMOND IS SCANNED AT THE SOURCE

BOTSWANA | NAMIBIA | SOUTH AFRICA | CANADA



ASSURANCE OF NATURAL DIAMONDS

WITH INSCRIPTION OF IDENTIFICATION CODE



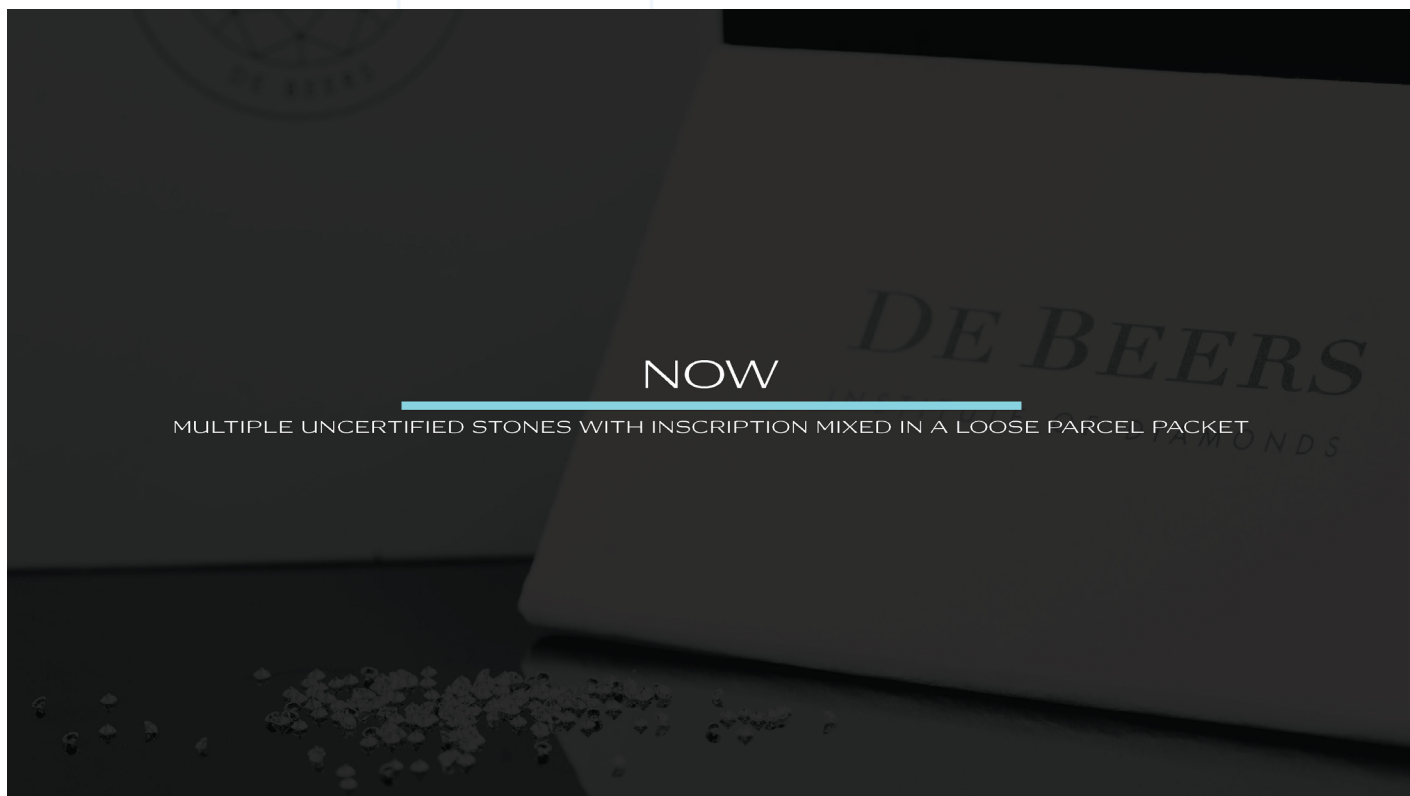
PIONEERING TRACEABILITY FOR LOOSE PARCELS

THE UPDATE



BEFORE

ONLY A SINGLE CERTIFIED STONE WITH INSCRIPTION IN A SINGLE PACKET





USING BLOCK CHAIN TECHNOLOGY

EACH AND EVERY DIAMOND IS PUBLICLY REGISTERED AND IDENTIFIABLE



tracr

DEVELOPED BY DE BEERS

TRACR™ PROVIDES TAMPER-PROOF SOURCE ASSURANCE AT SCALE, ENABLING OUR 'SIGHTHOLDER' ROUGH DIAMOND CUSTOMERS TO PROVIDE AN IMMUTABLE RECORD OF A DIAMOND'S PROVENANCE, AND EMPOWERING JEWELLERY RETAILERS TO HAVE CONFIDENCE IN THE ORIGIN OF THE DIAMONDS THEY PURCHASE.

The future of diamond traceability

Tracr™ is the world's leading digital platform for tracing natural diamonds from source at scale, bringing you the ability to explore the provenance, authenticity and the unique journey your diamond has taken along the diamond value chain.



tracr

DIAMOND EXPERIENCE

Discover your diamond's
traceability journey

Search diamonds by Tracr ID



YOUR NATURAL DIAMOND

tracr
ASSURED

Registered from source on the Tracr blockchain [Learn more](#)

Round 0.080 EX D VVS1
SHAPE ○ CARAT ○ CUT ○ COLOUR ○ CLARITY ○

clki6mwa4000o08w9ivdh7ib0
TRACR ID ○



DTC, 0.080CT, ROUND, VVS1, D COLOUR



clki6mwa4000o08w9ivdh7ib0



Discovered by **DTC**, which sources diamonds in **Botswana, Canada, Namibia and South Africa**

This diamond is immutably registered on the Tracr blockchain platform



ROUGH
0.182ct



SPLIT
0.182ct



POLISHED
0.080ct



ROUGH DIAMOND

Your diamond has a story to tell...

Deep beneath the earth's surface, carbon atoms undergo immense pressure and heat over billions of years to create something truly unique and rare.



1-3.5

BILLION YEARS AGO

200

KILOMETRES UNDERGROUND

2700

DEGREES FAHRENHEIT

50,000

ATMOSPHERES OF PRESSURE

Your rough diamond

Your diamond is a true survivor, having endured the immense pressures of the earth's core and experienced the raw power and beauty of the earth's forces.

It is this process that has enabled the creation of something as rare and stunning as your diamond.

0.184

CARAT ⓘ

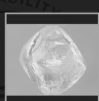
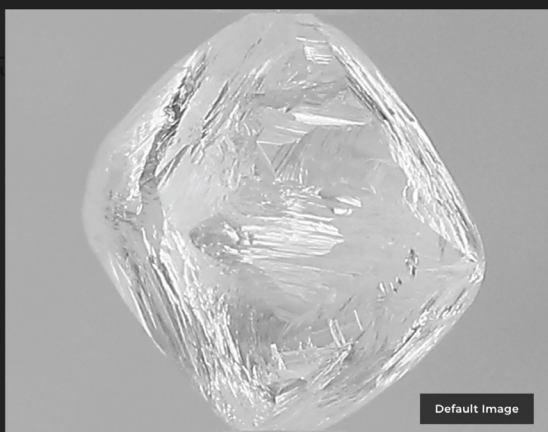
-

COLOUR ⓘ

-

MODEL ⓘ

DTC, 0.080CT, ROUND, VVS1, D COLOUR



Tracr ID	clki4cupi000g09w9gxewa9e9
Participant ID	331.82TRC-134.1_R
Provenance	DTC
Carat	0.182ct
Fluorescence Intensity	N
Box ID	455

SPLIT DIAMOND

Your split diamond

The split diamond is taken through several refinement processes which move it closer to its final stage. Each stage carefully refines the diamond, and the planner checks the progress against the initial plan.



0.182

CARAT ⓘ

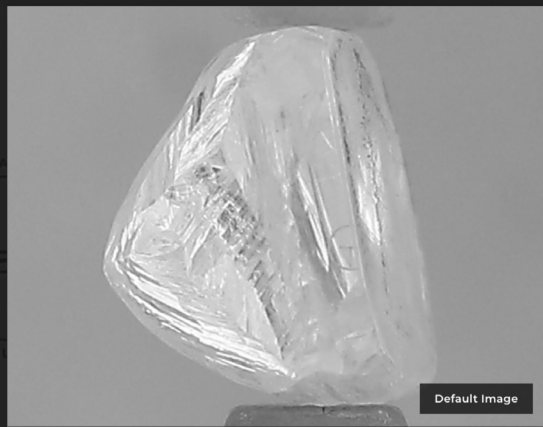
-

COLOUR ⓘ

-

MODEL ⓘ

DTC, 0.080CT, ROUND, VVS1, D COLOUR

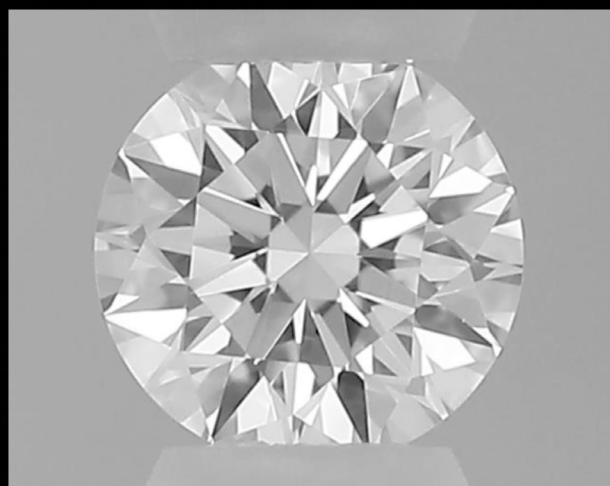


Tracr ID	clk6mwa4000o08w9ivdh7ib0
Participant ID	331.82TRC-134.1_P
Provenance	DTC
Carat	0.182ct
Fluorescence Intensity	N
Box ID	455

POLISHED DIAMOND

The polished diamond

The diamond is inspected and checked to ensure that its polish quality and cut parameters are aligned with the original plan. Only if the planner is satisfied with the work of the master polisher is the diamond released and ready to be graded, sold, or mounted.



Round

SHAPE ⓘ

0.080

CARAT ⓘ

EX

CUT ⓘ

D

COLOUR ⓘ

VVS1

CLARITY ⓘ



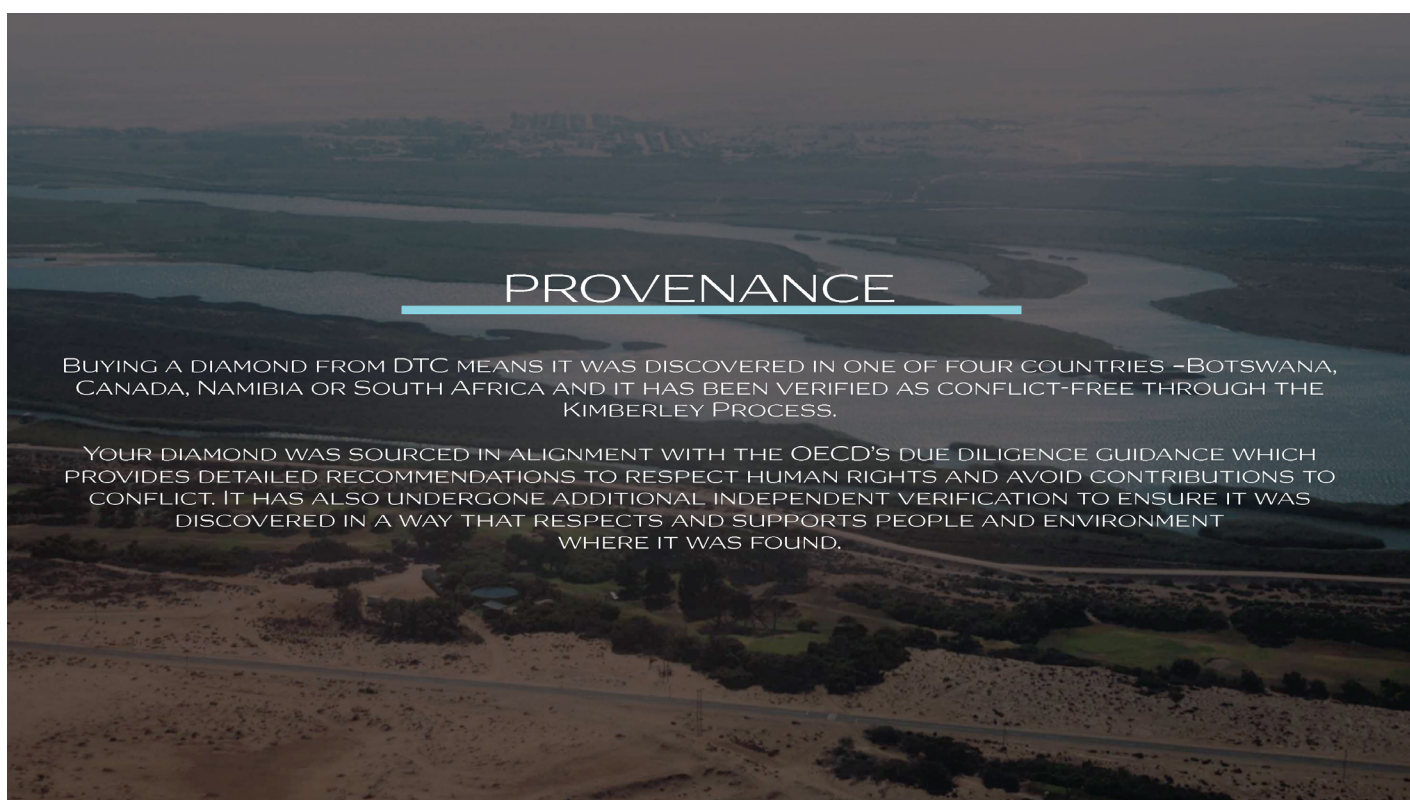
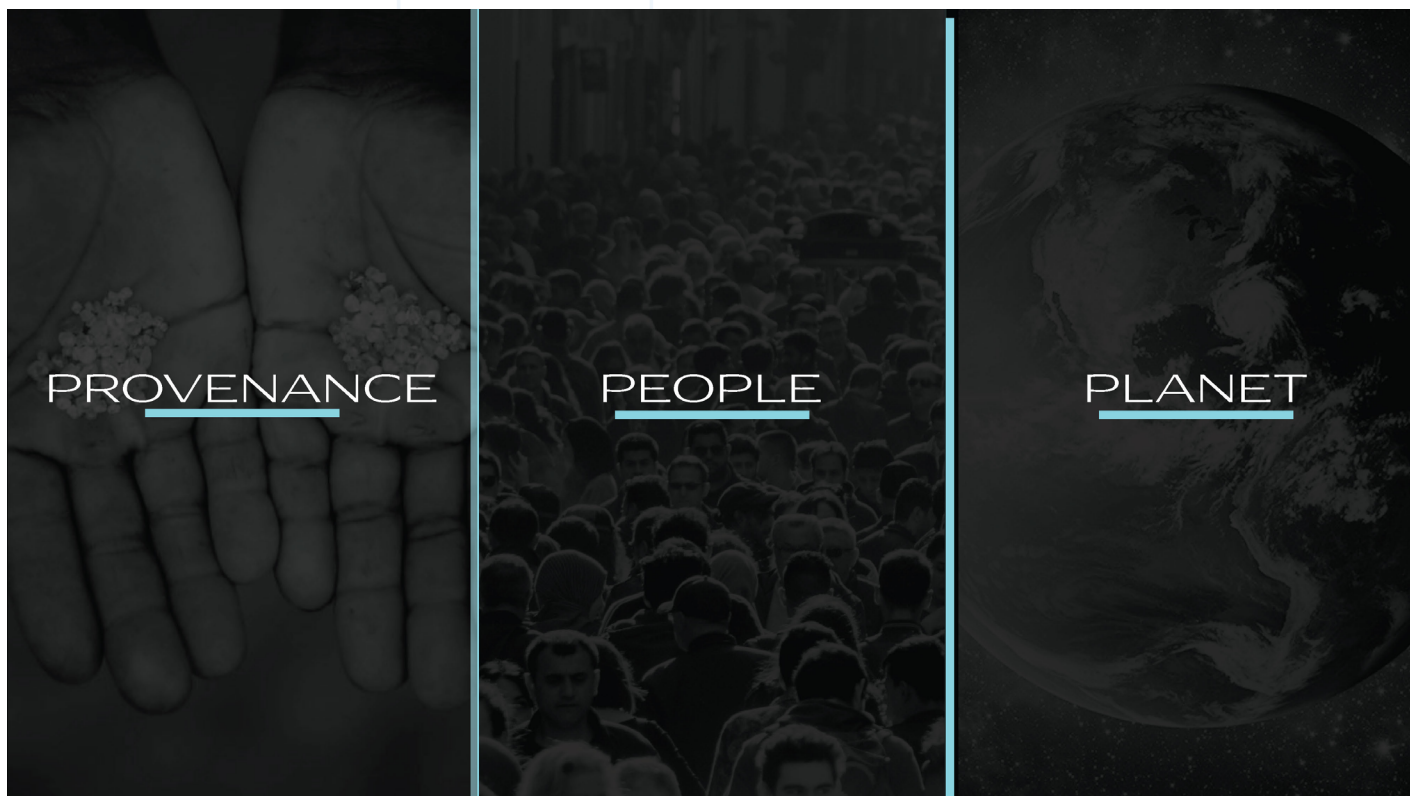
Best Practice Principles

All sites where diamonds from DTC originate comply with the rigorous standards of the Best Practice Principles (BPP) assurance programme, which covers business, human rights, social, environmental and mining risks. The BPP programme is based on the requirements of national law, and recognised, proven and established standards, such as the United Nations Guiding Principles on Business and Human Rights, and the International Finance Corporation's Performance Standards. All operations must complete a self-assessment annually against the requirements and host regular audits by third-party verifiers.

POSITIVE

ETHICS AND COMPLIANCE

ONLY SUPPLIERS THAT CAN PASS EXTENSIVE AUDITS OF
DE BEERS' BEST PRACTICE PRINCIPLE AND INTEGRITY CAN SUPPLY DIAMONDS WITH TRACR





PEOPLE

DIAMONDS ARE A FINITE RESOURCE THAT ARE INEXTRICABLY LINKED TO THE HEALTH AND PROSPERITY OF THE COMMUNITIES AROUND OUR OPERATIONS. DTC WORKS WITH PARTNERS TO TRANSFORM THE FINITE RESOURCE BELOW GROUND INTO INFINITE OPPORTUNITIES ABOVE GROUND.

THE PURCHASE OF THIS DIAMOND SUPPORTS AMBITIOUS TARGETS FOR IMPROVING HEALTH, EDUCATION AND LIVELIHOODS WITHIN HOST COMMUNITIES. IT ALSO HELPS SUPPORT A FOCUS ON PROVIDING OPPORTUNITIES FOR WOMEN AND GIRLS, INCLUDING ENTREPRENEUR DEVELOPMENT PROGRAMMES AND TRAINING IN THE SCIENCES, HELPING TO DIVERSIFY ECONOMIES AND ENSURE COMMUNITIES CONTINUE TO THRIVE LONG AFTER THE LAST DIAMOND IS DISCOVERED.



PLANET

DIAMOND IS A UNIQUE EXPRESSION OF THE POWER OF THE NATURAL WORLD. WORKING WITH DIAMONDS AT THEIR SOURCE INSPIRES A DEEP RESPECT FOR THE PLANET AND ALL ITS AWE-INSPIRING CREATIONS.

BIODIVERSITY, CLIMATE SECURITY, WATER BALANCE AND SOCIETY WELLBEING ARE ALL INTERLINKED, SO A DIAMOND PURCHASED THROUGH DTC SUPPORTS A COMPREHENSIVE PROGRAMME OF WORK ACROSS THESE CRITICAL AREAS SUCH AS HELPING PROTECT AND MANAGE LAND FOR CONSERVATION, AND HARNESSING INNOVATIVE TECHNOLOGIES TO WORK TO REDUCE EMISSIONS AND FRESHWATER USE.

LEGACY

It is important to know the positive legacy of your diamond - where it came from and how it was sourced. Buying a diamond from DTC means it was discovered in one of four countries—Botswana, Canada, Namibia, or South Africa—where it was verified as conflict-free through the Kimberley Process.



Your natural diamond

1.

Is conflict-free and meets world-leading ethical standards for sourcing.

2.

Has been verified as natural by the manufacturer as shown on the grading certificate.

3.

Was discovered by DTC in Botswana, Canada, Namibia, or South Africa.

4.

Was discovered with a focus on environmental responsibility and protecting the natural world

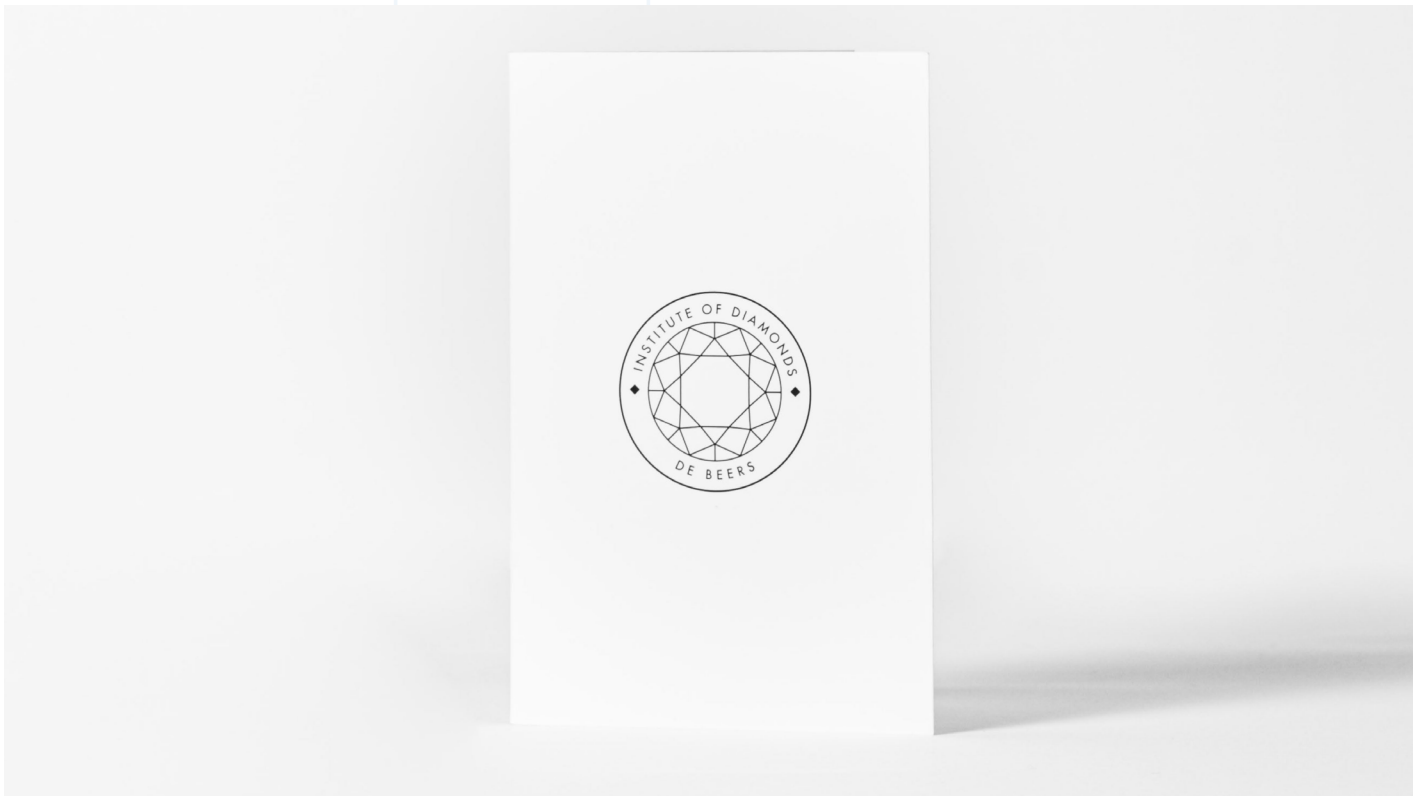
5.

Has supported communities where it was discovered through education, livelihoods, infrastructure and healthcare programmes.

DE BEERS ORIGIN

PROOF OF NATURAL AND CONFLICT FREE DIAMONDS







ORIGIN CARD

The Code of Origin inscribed on this diamond provides assurance that it is natural and conflict-free.

It was discovered in Botswana, Canada, Namibia or South Africa by De Beers.

Through this diamond, you are supporting education, women entrepreneurs and wildlife conservation in these countries.

Scan the QR code below to learn more:



CODE OF ORIGIN: DB 12371377



This card is recyclable

The Four Cs

Using specially developed proprietary instruments and technology, De Beers Institute of Diamonds objectively analyses every gem according to criteria based on the 4Cs. The higher a diamond sits on the 4Cs scale, the rarer it is, typically increasing its value.

Carat

The standard unit of weight for diamonds. One carat is equivalent to 200 milligrammes. Fractions of a carat are expressed in points. One point equals one hundredth of a carat. For example, a 50-point stone weighs 0.50 carat.

Colour

Polished diamonds are graded for subtle variations in depth of colour. Categories start with 'D', meaning 'colourless', and follow the rest of the alphabet to 'Z', indicating shades of yellow and light brown.

Clarity

Most diamonds feature tiny traces of other elements that were naturally incorporated as the diamond formed. These elements are identified by the Institute's expert analysis. The rarest diamonds are rated 'F', meaning 'absolutely flawless' and 'F', which stands for 'internally flawless'.

Cut

Science and art combine to make the most of a diamond through cut. The right proportions and finish create internal reflections that maximise a diamond's sparkle and enhance its visual impact.

The Fifth C: Confidence

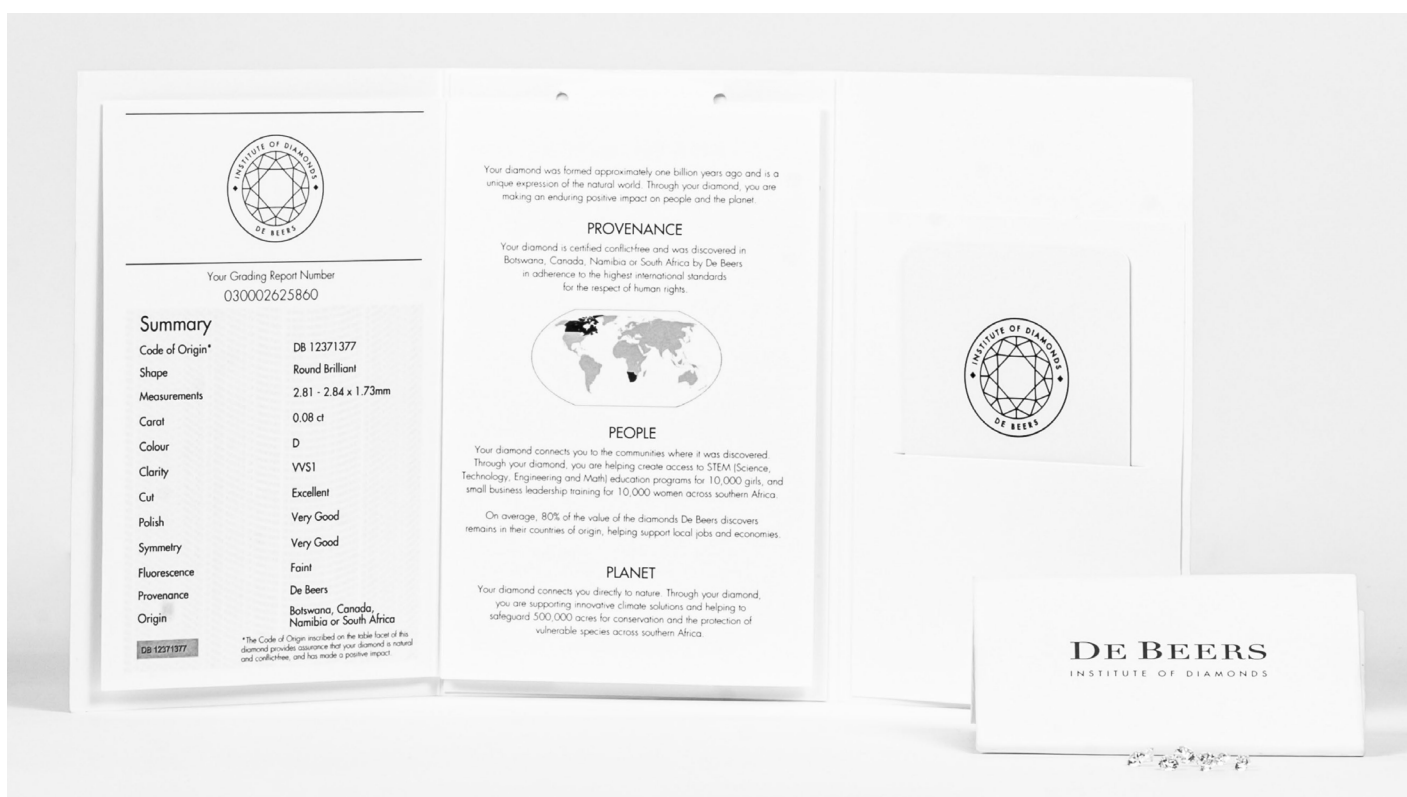
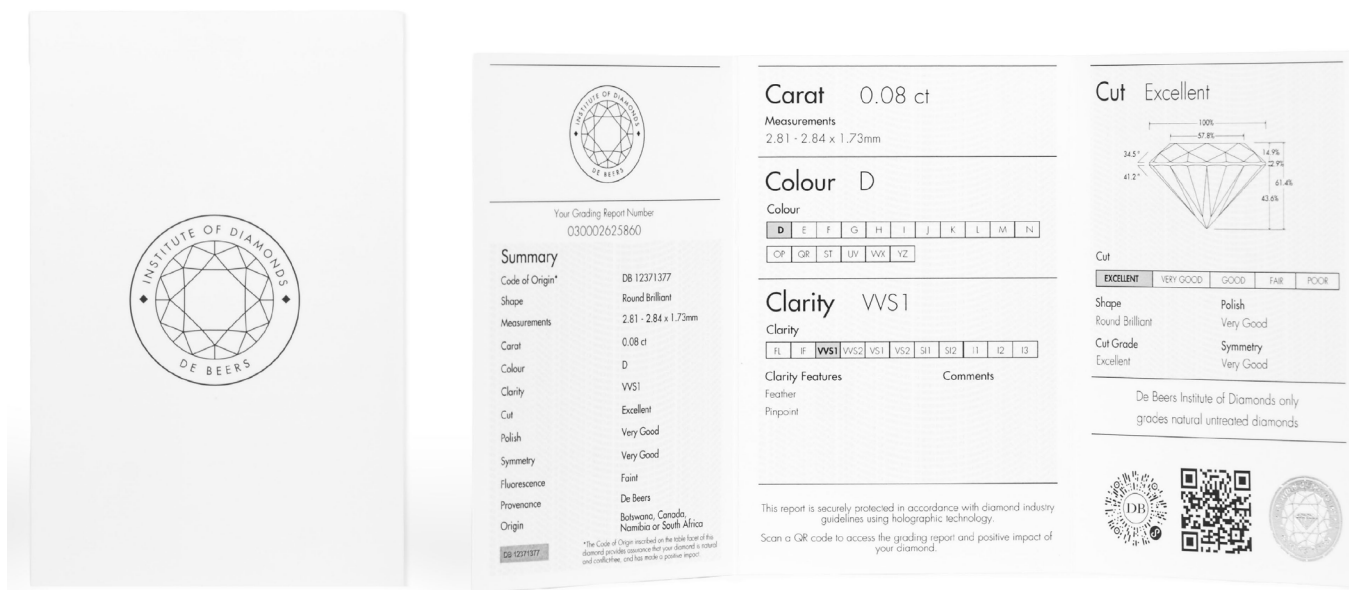
De Beers Institute of Diamonds only grades and inscribes diamonds that meet the United Nations' mandated World Diamond Council Kimberley Process.

- Confidence that every diamond we grade has benefited from our unrivalled range of accumulated knowledge and expertise.
- Confidence in the skills and proprietary technology of the most advanced diamond grading and verification instruments.



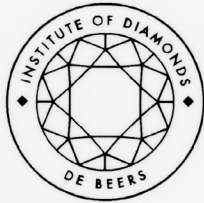
NATURAL DIAMOND ORIGIN & IDENTIFICATION REPORT





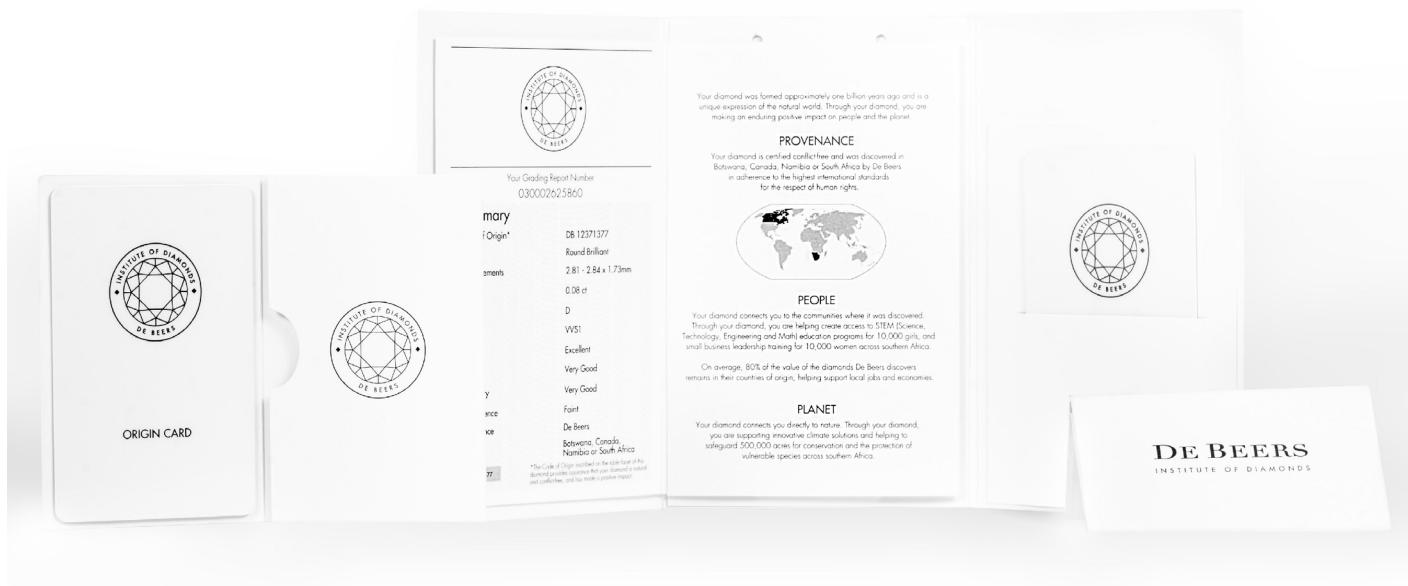
DE BEERS

INSTITUTE OF DIAMONDS



ORIGIN CARD

DE BEERS
INSTITUTE OF DIAMONDS







ORIGINALLUXURY

**Pioneering Transparency Through
Technology in the Luxury Sector**